

MONTHLY MEMBERSHIP PROGRESS REPORT

LOCATION INDIA

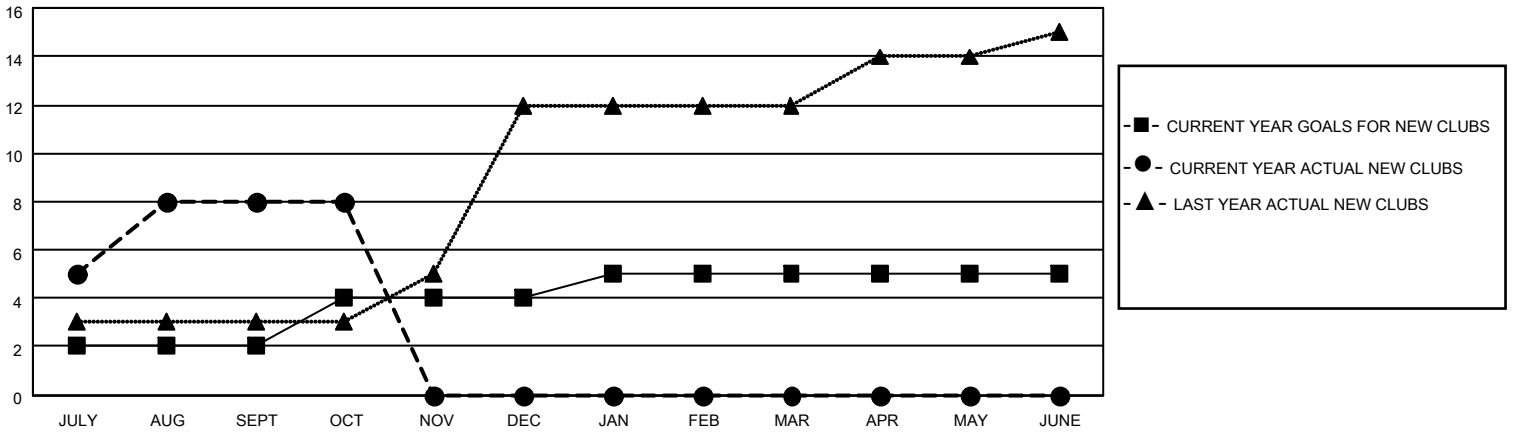
District 322 A

Results as of: 10/31/2021

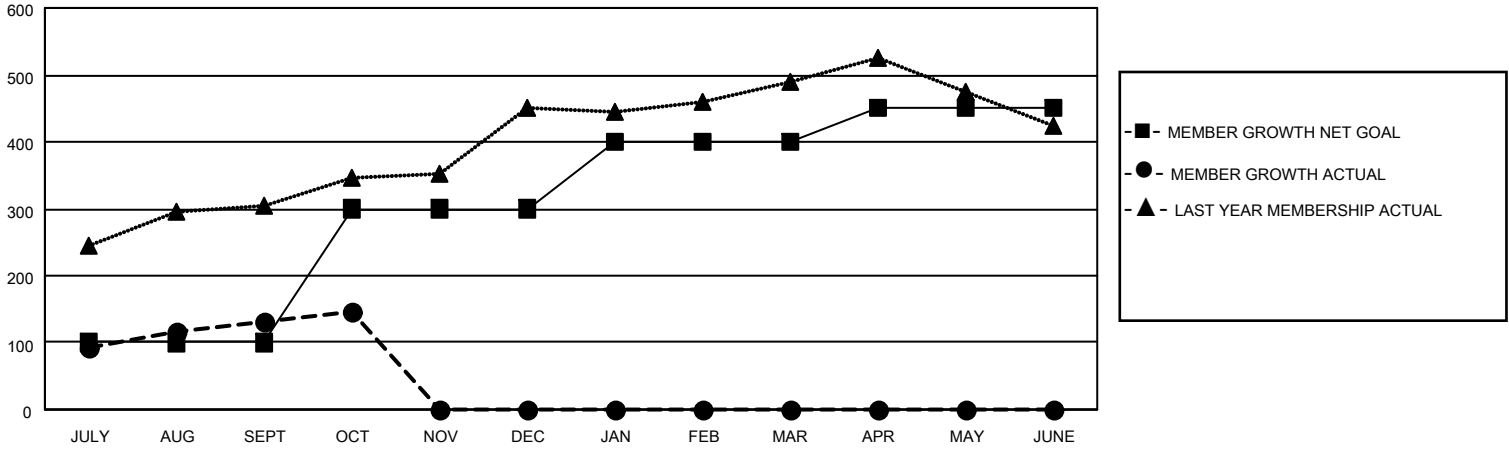
Clubs			
RESULTS FOR 2021-2022			
QUARTER	NEW CLUB GOAL	NEW CLUBS	DROPPED CLUBS
JULY/AUG/SEPT	2	8	3
OCT/NOV/DEC	2	0	0
JAN/FEB/MAR	1	0	0
APR/MAY/JUNE	0	0	0

Members			
RESULTS FOR 2021-2022			
QUARTER	MEMBER GROWTH NET GOAL	MEMBER GROWTH ACTUAL	DROPPED MEMBERS ACTUAL (including transfers)
JULY/AUG/SEPT	100	343	197
OCT/NOV/DEC	200	19	3
JAN/FEB/MAR	100	0	0
APR/MAY/JUNE	50	0	0

GOALS AND ACTUAL NEW CLUBS CUMULATIVE



GOALS AND ACTUAL MEMBERS CUMULATIVE



DROPPED CLUBS: 3	
DROPPED MEMBERS	
DECEASED	2
CLUB CANCELLED	13
OTHER	185
TOTAL	200

35 CLUBS OF 95 ADDED 1 OR MORE NEW MEMBERS

[CLICK HERE FOR CUMULATIVE MEMBERSHIP DATA](#)

<u>GENDER DISTRIBUTION</u>	
MALE	2,478 (68.51%)
FEMALE	1,138 (31.46%)
NON BINARY	0 (0.00%)
PREFER NOT TO ANSWER	1 (0.03%)
TOTAL FAMILY UNIT MEMBERS	1,680
FAMILY MEMBERS PAYING HALF DUES	908